

Classification canceled by authority of
 OPNAVINST 5513.16 enclosure (2)
 on 12-5-60 RM [Signature] [Rank]
 (Date) (Signature) (Rank)
 NAVAL SEA SYSTEMS COMMAND
 Department of the Navy

U. S. S. LISCOMB BAY (CVE56)

LOSS IN ACTION

GILBERT ISLANDS, CENTRAL PACIFIC
 24 NOVEMBER, 1943

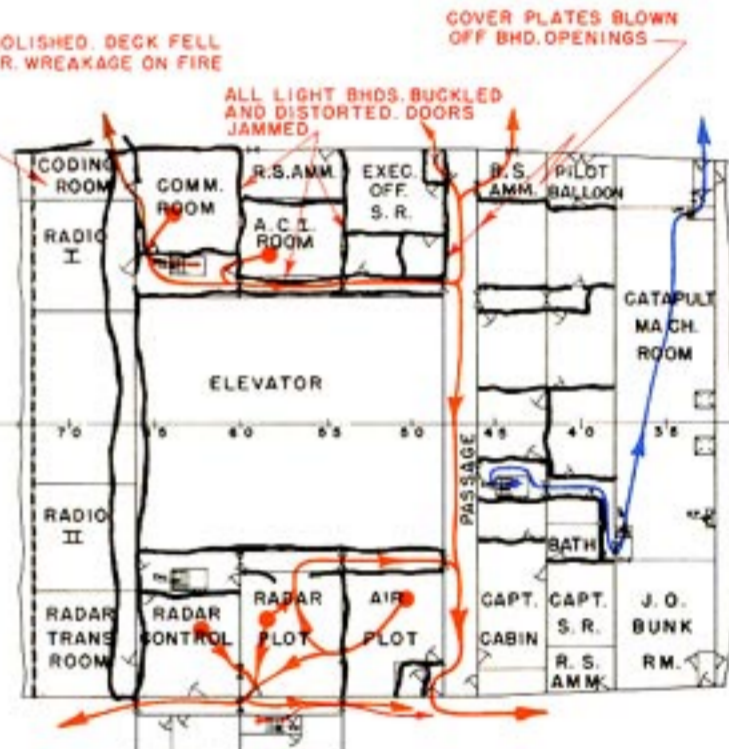
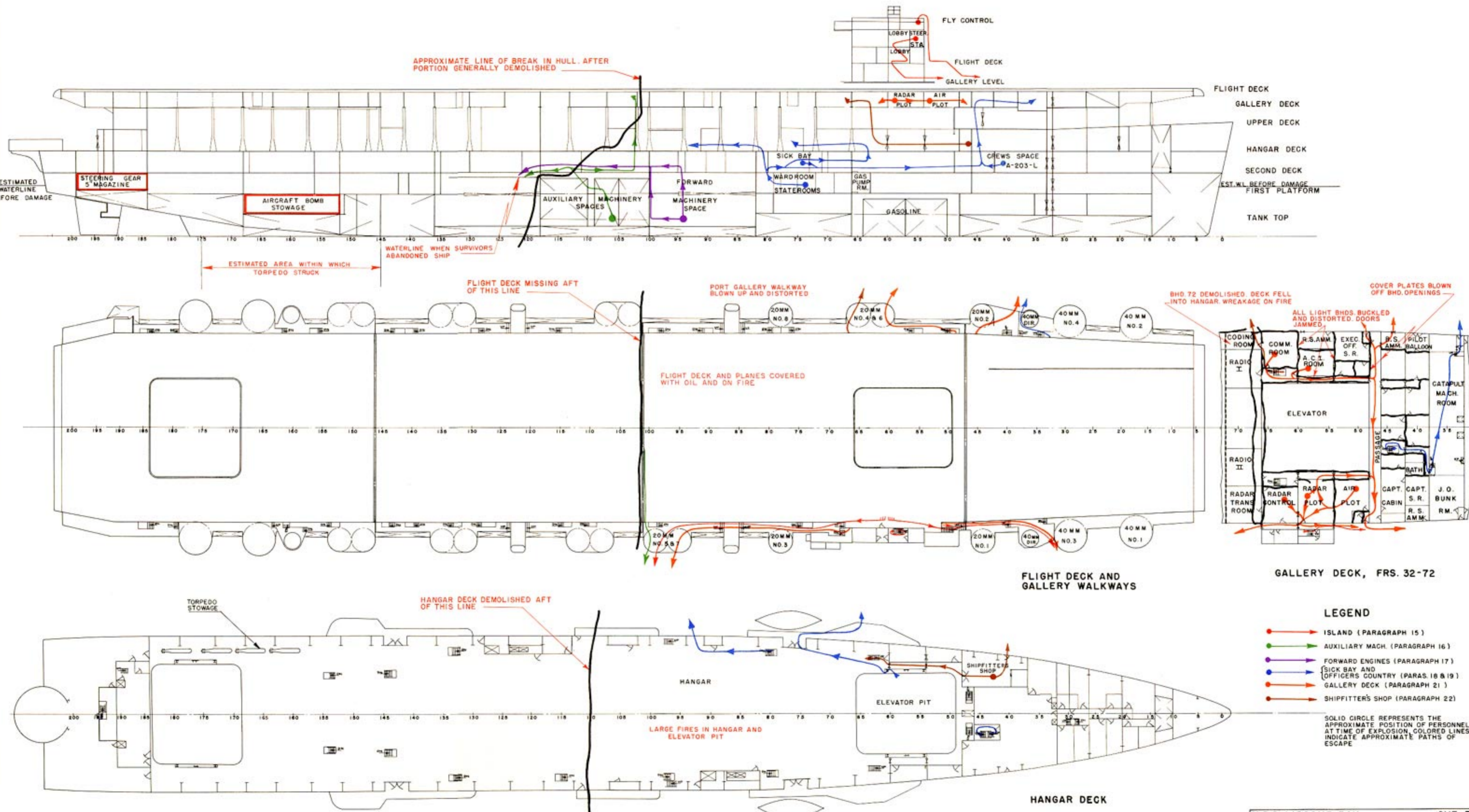
The Commander-in-Chief, United States Fleet and Chief of Naval Operations directs that this report be shown only to those persons to whom the report would be of value in the performance of their duties.

Steps shall be taken accordingly to insure that the report will be seen by those persons responsible for design, construction and repair of naval vessels, as well as for their operation, but by no others.

10 March, 1944

Preliminary Design Section
 Bureau of Ships
 Navy Department

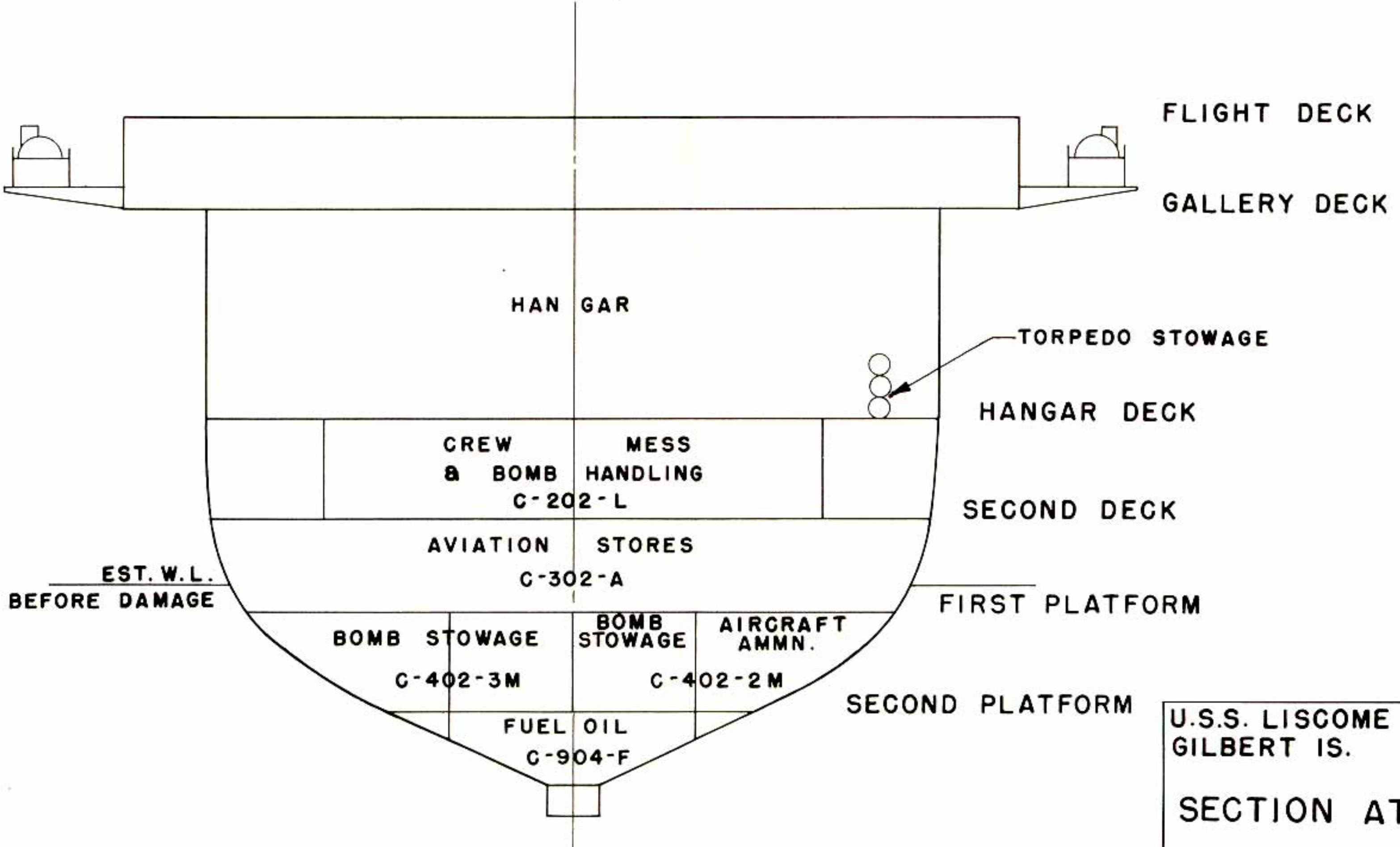
WAR DAMAGE REPORT No. 45



GALLERY DECK, FRs. 32-72

- LEGEND**
- ISLAND (PARAGRAPH 15)
 - AUXILIARY MACH. (PARAGRAPH 16)
 - FORWARD ENGINES (PARAGRAPH 17)
 - SICK BAY AND OFFICERS COUNTRY (PARAS. 18 & 19)
 - GALLERY DECK (PARAGRAPH 21)
 - SHIPFITTER'S SHOP (PARAGRAPH 22)
- SOLID CIRCLE REPRESENTS THE APPROXIMATE POSITION OF PERSONNEL AT TIME OF EXPLOSION. COLORED LINES INDICATE APPROXIMATE PATHS OF ESCAPE.

U.S.S. LISCOMBE BAY CVE-56
 GILBERT IS. 24 NOV. 1943
DAMAGE AND PATHS OF SURVIVORS - PART I
 NAVY DEPT. BUREAU OF SHIPS
C. W. Keeler



FLIGHT DECK

GALLERY DECK

HAN GAR

TORPEDO STOWAGE

HANGAR DECK

CREW & BOMB
C-202-L

SECOND DECK

AVIATION STORES
C-302-A

FIRST PLATFORM

BOMB STOWAGE
C-402-3M

BOMB STOWAGE
C-402-2M

AIRCRAFT
AMMN.

SECOND PLATFORM

FUEL OIL
C-904-F

EST. W.L.
BEFORE DAMAGE

U.S.S. LISCOME BAY CVE-56
GILBERT IS. 24 NOV. 1943

SECTION AT FRAME 162

NAVY DEPT. BUREAU OF SHIPS

CDW Lealock

SECTION AT FRAME 162
LOOKING AFT